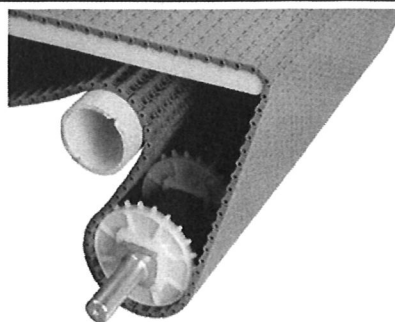


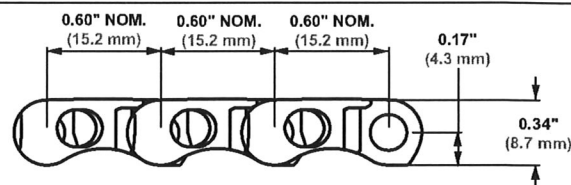
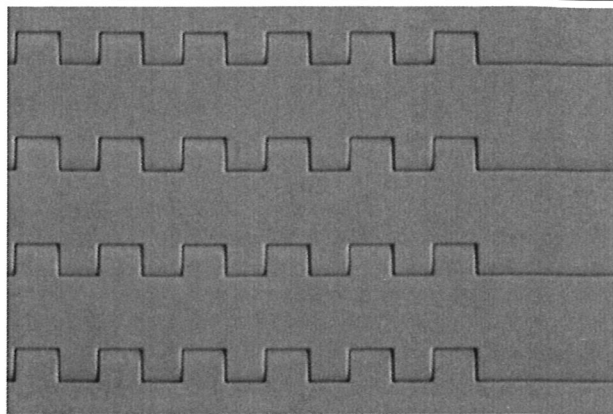
Flat Top

	in	mm
Pitch	0.60	15.2
Minimum Width	3	76
Width Increments	0.50	12.7
Opening Sizes (approx.)	-	-
Open Area	0%	
Hinge Style	Closed	
Drive Method	Center/hinge-driven	
Rod Retention; Rod Type	Occluded edge; unheaded	



Product Notes

- **Contact Intralox for precise belt measurements and stock status before designing equipment or ordering a belt.**
- Smooth, closed upper surface with fully flush edges.
- Closed edges on one side of the belt.
- Minimal back tension required.
- Underside design and small pitch allow the belt to run smoothly around nosebars.
- Lug tooth sprockets improve sprocket engagement and simplify installation.
- Small pitch reduces chordal action and transfer dead plate gap.
- Can be used over 0.75 in (19.1 mm) diameter nosebars for tight transfers.



Belt Data

Belt material	Standard rod material 0.18 in (4.6 mm)	Belt strength		Temperature range (continuous)		Belt weight	
		lb/ft	kg/m	°F	°C	lb/ft²	kg/m²
Acetal	Polypropylene	1500	2232	34 to 200	1 to 93	1.55	7.57
Polypropylene	Polypropylene	1000	1490	34 to 220	1 to 104	1.07	5.22
Polyethylene	Polyethylene	600	893	-50 to 150	-46 to 66	1.11	5.42
HR nylon	Nylon	1000	1490	-50 to 240	-46 to 116	1.31	6.43