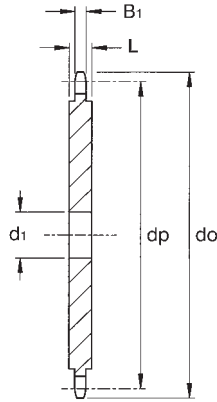


# Standard Platewheels for 8mm Pitch British Standard Chains Type 05B

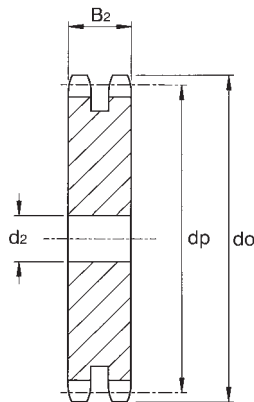


## Platewheels for Simplex Chain 05B-1 Conforming to ISO 606



- Chain No: 05B-1  
 Pitch 8.0mm  
 Roller Dia. 5.0mm  
 Inside Width 3.0mm  
 Overall Width 11.7mm  
 Tooth Width B<sub>1</sub> 2.8mm  
 Plate Width L 2.8mm (up to 40T)  
 4.0mm (41T & over)

## Platewheels for Duplex Chain 05B-2 Conforming to ISO 606



- Chain No: 05B-2  
 Pitch 8.0mm  
 Roller Dia. 5.0mm  
 Inside Width 3.0mm  
 Overall Width 17.4mm  
 Tooth Width B<sub>2</sub> 8.3mm

No. Teeth	Pitch Circle Ø dp	Outside Ø do	Platewheel for 05B-1			Platewheel for 05B-1		
			Cat. No.	Min Bore d <sub>1</sub>	Approx. Weight kg	Cat. No.	Min Bore d <sub>2</sub>	Approx. Weight kg
8	20.90	24.0	P05B1-08	6	0.005	P05B2-08	8	0.010
9	23.39	26.6	P05B1-09	6	0.006	P05B2-09	8	0.014
10	25.89	29.2	P05B1-10	8	0.008	P05B2-10	8	0.019
11	28.39	31.7	P05B1-11	8	0.010	P05B2-11	8	0.025
12	30.91	34.2	P05B1-12	8	0.012	P05B2-12	8	0.031
13	33.42	36.7	P05B1-13	8	0.014	P05B2-13	8	0.038
14	35.95	39.2	P05B1-14	8	0.017	P05B2-14	8	0.046
15	38.48	41.7	P05B1-15	8	0.020	P05B2-15	8	0.054
16	41.01	44.3	P05B1-16	8	0.023	P05B2-16	10	0.061
17	43.53	46.8	P05B1-17	8	0.027	P05B2-17	10	0.071
18	46.07	49.3	P05B1-18	8	0.030	P05B2-18	10	0.081
19	48.61	51.9	P05B1-19	8	0.034	P05B2-19	10	0.092
20	51.14	54.4	P05B1-20	8	0.038	P05B2-20	10	0.104
21	53.68	57.0	P05B1-21	8	0.042	P05B2-21	10	0.116
22	56.21	59.5	P05B1-22	8	0.046	P05B2-22	10	0.129
23	58.75	62.0	P05B1-23	8	0.051	P05B2-23	10	0.143
24	61.29	64.6	P05B1-24	8	0.056	P05B2-24	10	0.157
25	63.83	67.5	P05B1-25	8	0.061	P05B2-25	10	0.172
26	66.37	69.5	P05B1-26	10	0.066	P05B2-26	12	0.185
27	68.91	72.2	P05B1-27	10	0.071	P05B2-27	12	0.202
28	71.45	74.8	P05B1-28	10	0.077	P05B2-28	12	0.219
29	73.99	77.3	P05B1-29	10	0.083	P05B2-29	12	0.236
30	76.53	79.8	P05B1-30	10	0.090	P05B2-30	12	0.255
31	79.08	82.4	P05B1-31	10	0.096	P05B2-31	12	0.274
32	81.61	84.9	P05B1-32	10	0.102	P05B2-32	12	0.293
33	84.16	87.5	P05B1-33	10	0.109	P05B2-33	12	0.314
34	86.70	90.0	P05B1-34	10	0.116	P05B2-34	12	0.335
35	89.25	92.5	P05B1-35	10	0.123	P05B2-35	12	0.356
36	91.79	95.0	P05B1-36	10	0.130	P05B2-35	12	0.378
37	94.33	97.6	P05B1-37	10	0.138	P05B2-37	12	0.401
38	96.88	100.2	P05B1-38	10	0.146	P05B2-38	12	0.425
39	99.42	102.7	P05B1-39	10	0.154	P05B2-39	12	0.449
40	101.97	105.3	P05B1-40	10	0.162	P05B2-40	12	0.474
41	104.51	107.8	P05B1-41	12	0.263	P05B2-41	14	0.494
42	107.05	110.4	P05B1-42	12	0.277	P05B2-42	14	0.520
43	109.60	112.9	P05B1-43	12	0.292	P05B2-43	14	0.547
44	112.14	115.5	P05B1-44	12	0.306	P05B2-44	14	0.575
45	114.69	118.0	P05B1-45	12	0.321	P05B2-45	14	0.603
46	117.23	120.6	P05B1-46	12	0.336	P05B2-46	14	0.632
47	119.77	123.1	P05B1-47	12	0.356	P05B2-47	14	0.662
48	122.32	125.6	P05B1-48	12	0.368	P05B2-48	14	0.692
49	124.86	128.2	P05B1-49	12	0.385	P05B2-49	14	0.723
50	127.41	130.7	P05B1-50	12	0.401	P05B2-50	14	0.754
51	129.95	133.3	P05B1-51	14	0.415	P05B2-51	16	0.787
52	132.49	135.8	P05B1-52	14	0.433	P05B2-52	16	0.819
53	135.04	138.4	P05B1-53	14	0.450	P05B2-53	16	0.853
54	137.59	140.9	P05B1-54	14	0.468	P05B2-54	16	0.887
55	140.13	143.5	P05B1-55	14	0.487	P05B2-55	16	0.922
56	142.68	146.0	P05B1-56	14	0.506	P05B2-56	16	0.958
57	145.22	148.6	P05B1-57	14	0.525	P05B2-57	16	0.994
58	147.77	151.0	P05B1-58	14	0.544	P05B2-58	16	1.031
59	150.31	153.6	P05B1-59	14	0.564	P05B2-59	16	1.068
60	152.85	156.2	P05B1-60	14	0.585	P05B2-60	16	1.106
62	157.95	162.0	P05B1-62	16	0.626	P05B2-62	20	1.178
64	163.04	167.1	P05B1-64	16	0.669	P05B2-64	20	1.259
65	165.58	169.6	P05B1-65	16	0.691	P05B2-65	20	1.300
66	168.13	172.2	P05B1-66	16	0.713	P05B2-66	20	1.342
68	173.22	177.3	P05B1-68	16	0.759	P05B2-68	20	1.429
70	178.31	182.4	P05B1-70	16	0.806	P05B2-70	20	1.518
72	183.41	187.5	P05B1-72	20	0.851	P05B2-72	20	1.609
75	191.04	195.1	P05B1-75	20	0.926	P05B2-75	20	1.752
76	193.59	197.7	P05B1-76	20	0.952	P05B2-76	20	1.800
78	198.68	202.8	P05B1-78	20	1.000	P05B2-78	20	1.900
80	203.77	207.9	P05B1-80	20	1.051	P05B2-80	20	2.005
85	216.50	220.6	P05B1-85	20	1.200	P05B2-85	20	2.270
90	229.23	233.4	P05B1-90	20	1.351	P05B2-90	20	2.555
95	241.96	246.1	P05B1-95	20	1.510	P05B2-95	20	2.855
100	254.68	258.9	P05B1-100	20	1.678	P05B2-100	20	3.170
110	280.15	284.3	P05B1-110	20	2.040	P05B2-110	20	3.855
114	290.33	294.5	P05B1-114	20	2.195	P05B2-114	20	4.150
120	305.61	310.0	P05B1-120	20	2.440	P05B2-120	20	4.610
125	318.34	322.5	P05B1-125	20	2.650	P05B2-125	20	5.010

All dimensions in mm.  
 Stock Platewheels can be reworked to customers bore and keyway requirements, on 48 hour service.  
 Platewheels manufactured in steel 8 to 40 tooth with a minimum U.T.S. 600N/mm<sup>2</sup> - Above 40T - 410N/mm<sup>2</sup>  
 Platewheels 8 to 40 tooth can be supplied with teeth induction hardened to 45Rc."

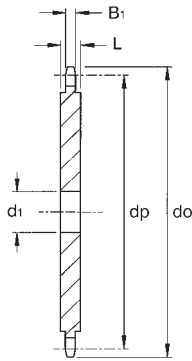
Tel +44(0) 121 360 0155 Fax +44(0) 121 325 1079 Email sales@crossmorse.com



# Standard Platewheels for 1/2" Pitch Narrow Series Roller Chains

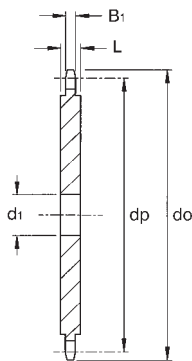


## Platewheels for Simplex Chain 081 Conforming to ISO 606



Chain No: 081  
Pitch 12.7mm  
Roller Dia. 7.75mm  
Inside Width 3.3mm  
Tooth Width B<sub>1</sub> 3.3mm  
Plate Width:  
L: 3.0mm (up to 40T)  
L: 4.0mm (up to 85T)  
L: 6.0mm (90T over)

## Platewheels for Simplex Chain 083\* Conforming to ISO 606



Chain No: 083  
Pitch 12.7mm  
Roller Dia. 7.75mm  
Inside Width 4.88mm  
Tooth Width B<sub>1</sub> 4.5mm  
Plate Width:  
L: 4.5mm (up to 85T)  
L: 6.0mm (90T over)

No. Teeth	Pitch Circle Ø dp	Outside Ø do	Platewheel for 081 Chain			Platewheel for 083 Chain*		
			Cat. No.	Min. Bore d <sub>i</sub>	Approx. Weight kg	Cat. No.	Min. Bore d <sub>i</sub>	Approx. Weight kg
8	33.18	37.2	P081-08	8	.015	P083-08	8	.02
9	37.13	41.5	P081-09	8	.02	P083-09	8	.03
10	41.10	46.2	P081-10	8	.025	P083-10	8	.035
11	45.07	49.6	P081-11	8	.03	P083-11	8	.045
12	49.07	53.9	P081-12	8	.035	P083-12	8	.055
13	53.06	58.4	P081-13	8	.045	P083-13	8	.065
14	57.07	62.8	P081-14	8	.05	P083-14	8	.075
15	61.09	66.8	P081-15	8	.06	P083-15	8	.09
16	65.10	70.9	P081-16	10	.065	P083-16	10	.10
17	69.11	74.9	P081-17	10	.075	P083-17	10	.11
18	73.14	78.9	P081-18	10	.085	P083-18	10	.13
19	77.16	82.9	P081-19	10	.095	P083-19	10	.14
20	81.19	86.9	P081-20	10	.11	P083-20	10	.16
21	85.22	91.0	P081-21	10	.12	P083-21	10	.18
22	89.24	95.0	P081-22	10	.13	P083-22	10	.20
23	93.27	99.0	P081-23	10	.145	P083-23	10	.22
24	97.29	103.0	P081-24	10	.16	P083-24	10	.24
25	101.33	107.1	P081-25	10	.17	P083-25	10	.26
26	105.36	111.2	P081-26	12	.185	P083-26	12	.28
27	109.40	115.4	P081-27	12	.20	P083-27	12	.30
28	113.42	119.4	P081-28	12	.215	P083-28	12	.32
29	117.46	123.4	P081-29	12	.23	P083-29	12	.35
30	121.50	127.5	P081-30	12	.25	P083-30	12	.37
31	125.54	131.5	P081-31	12	.27	P083-31	12	.40
32	129.56	135.5	P081-32	12	.29	P083-32	12	.43
33	133.60	139.6	P081-33	12	.30	P083-33	12	.45
34	137.64	143.6	P081-34	12	.32	P083-34	12	.48
35	141.68	147.6	P081-35	12	.35	P083-35	12	.51
36	145.72	151.7	P081-36	16	.36	P083-36	16	.54
37	149.76	155.7	P081-37	16	.38	P083-37	16	.57
38	153.80	159.8	P081-38	16	.41	P083-38	16	.60
39	157.83	163.8	P081-39	16	.43	P083-39	16	.64
40	161.87	167.8	P081-40	16	.45	P083-40	16	.67
41	165.91	171.4	P081-41	16	.63	P083-41	16	.71
42	169.95	175.4	P081-42	16	.66	P083-42	16	.74
43	173.99	179.5	P081-43	16	.69	P083-43	16	.78
44	178.03	183.5	P081-44	16	.72	P083-44	16	.82
45	182.07	187.5	P081-45	16	.76	P083-45	16	.86
46	186.10	191.6	P081-46	20	.79	P083-46	20	.89
47	190.14	195.6	P081-47	20	.83	P083-47	20	.93
48	194.18	199.7	P081-48	20	.86	P083-48	20	.97
49	198.22	203.7	P081-49	20	.90	P083-49	20	1.02
50	202.26	207.8	P081-50	20	.94	P083-50	20	1.06
51	206.30	211.8	P081-51	20	.98	P083-51	20	1.10
52	210.34	215.9	P081-52	20	1.02	P083-52	20	1.15
53	214.37	219.9	P081-53	20	1.06	P083-53	20	1.19
54	218.43	224.0	P081-54	20	1.10	P083-54	20	1.24
55	222.46	228.0	P081-55	20	1.14	P083-55	20	1.29
56	226.50	232.1	P081-56	20	1.18	P083-56	20	1.34
57	230.54	236.1	P081-57	20	1.23	P083-57	20	1.39
58	234.58	240.2	P081-58	20	1.27	P083-58	20	1.44
59	238.62	244.2	P081-59	20	1.32	P083-59	20	1.49
60	242.66	248.2	P081-60	20	1.36	P083-60	20	1.54
62	250.75	256.7	P081-62	20	1.46	P083-62	20	1.64
64	258.82	264.8	P081-64	20	1.55	P083-64	20	1.75
65	262.86	268.8	P081-65	20	1.60	P083-65	20	1.81
66	266.90	272.9	P081-66	25	1.65	P083-66	25	1.86
68	274.99	280.9	P081-68	25	1.75	P083-68	25	1.98
70	283.07	289.0	P081-70	25	1.86	P083-70	25	2.10
72	291.16	297.1	P081-72	25	1.97	P083-72	25	2.22
76	307.33	313.3	P081-76	25	2.20	P083-76	25	2.48
78	315.40	321.4	P081-78	25	2.32	P083-78	25	2.62
80	323.48	329.4	P081-80	25	2.44	P083-80	25	2.76
85	343.70	349.7	P081-85	25	2.76	P083-85	25	3.12
90	363.90	369.9	P081-90	25	4.70	P083-90	25	4.70
95	384.10	390.1	P081-95	25	5.25	P083-95	25	5.25
100	404.13	410.3	P081-100	25	5.85	P083-100	25	5.85
110	444.74	450.7	P081-110	25	7.10	P083-110	25	7.10
114	460.90	466.9	P081-114	25	7.60	P083-114	25	7.60
120	485.16	491.2	P081-120	25	8.45	P083-120	25	8.45
125	505.37	511.4	P081-125	25	9.18	P083-125	25	9.18

All dimensions in mm. Material - Steel with min. U.T.S. 490 N/mm<sup>2</sup>

Stock Platewheels can be bored to customers requirements, or supplied with threaded bore to suit adapters. Ref. page 69, all on 48 hour service.

Platewheels manufactured in steel 8 to 40 tooth with a minimum U.T.S. 600N/mm<sup>2</sup> - Above 40T - 410N/mm<sup>2</sup>

Platewheels 8 to 40 tooth can be supplied with teeth induction hardened to 45Rc.

\*Also suitable for 084 and 08N Chains.

Tel +44(0) 121 360 0155

Fax +44(0) 121 325 1079

Email sales@crossmorse.com







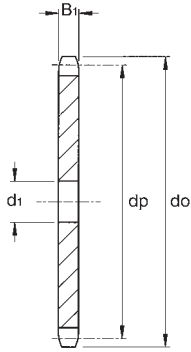


# Standard Platewheels for 1 1/4" Pitch British Standard Chain Type 20B



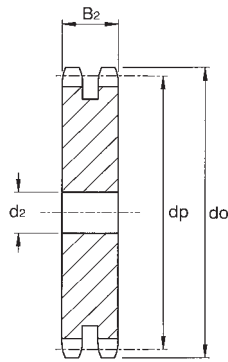
Email sales@crossmorse.com  
 Fax +44(0) 121 325 1079  
 Tel +44(0) 121 360 0155

## Platewheels for Simplex Chain 20B-1 Conforming to ISO 606



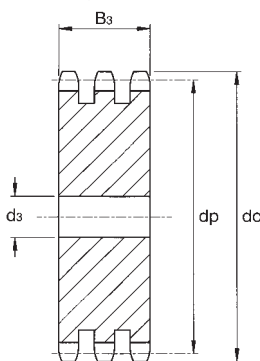
Chain No: 20B-1  
 Pitch 31.75mm  
 Roller Dia. 19.05mm  
 Inside Width 19.56mm  
 Overall Width 44.1mm  
 Tooth Width B<sub>1</sub> 18.5mm

## Platewheels for Duplex Chain 20B-2 Conforming to ISO 606



Chain No: 20B-2  
 Pitch 31.75mm  
 Roller Dia. 19.05mm  
 Inside Width 19.56mm  
 Overall Width 80.5mm  
 Tooth Width B<sub>2</sub> 54.6mm

## Platewheels for Triplex Chain 20B-3 Conforming to ISO 606



Chain No: 20B-3  
 Pitch 31.75mm  
 Roller Dia. 19.05mm  
 Inside Width 19.56mm  
 Overall Width 117.1mm  
 Tooth Width B<sub>3</sub> 91.0mm

No. Teeth	Pitch Circle Ø dp	Outside Ø do	Platewheel for 20B-1 Chain			Platewheel for 20B-2 Chain			Platewheel for 20B-3 Chain		
			Cat. No.	Min. Bore d <sub>i</sub>	Approx. Weight kg	Cat. No.	Min. Bore d <sub>i</sub>	Approx. Weight kg	Cat. No.	Min. Bore d <sub>i</sub>	Approx. Weight kg
8	82.96	98.1	P20B1-08	16	0.5	P20B2-08	20	1.3	P20B3-08	20	2.0
9	92.84	108.0	P20B1-09	16	0.7	P20B2-09	20	1.7	P20B3-09	20	2.8
10	102.74	117.9	P20B1-10	16	0.9	P20B2-10	20	2.3	P20B3-10	20	3.6
11	112.68	127.8	P20B1-11	20	1.1	P20B2-11	20	2.9	P20B3-11	25	4.5
12	122.68	137.8	P20B1-12	20	1.3	P20B2-12	20	3.5	P20B3-12	25	5.6
13	132.65	147.8	P20B1-13	20	1.6	P20B2-13	20	4.3	P20B3-13	25	6.8
14	142.68	157.8	P20B1-14	20	1.9	P20B2-14	20	5.1	P20B3-14	25	8.2
15	152.72	167.9	P20B1-15	20	2.2	P20B2-15	20	6.0	P20B3-15	25	9.6
16	162.75	177.9	P20B1-16	25	2.5	P20B2-16	30	6.8	P20B3-16	30	11.0
17	172.78	187.9	P20B1-17	25	2.9	P20B2-17	30	7.8	P20B3-17	30	12.7
18	182.85	198.0	P20B1-18	25	3.2	P20B2-18	30	8.9	P20B3-18	30	14.5
19	192.91	208.1	P20B1-19	25	3.6	P20B2-19	30	10.0	P20B3-19	30	16.4
20	202.98	218.1	P20B1-20	25	4.1	P20B2-20	30	11.2	P20B3-20	30	18.4
21	213.04	228.2	P20B1-21	25	4.5	P20B2-21	30	12.5	P20B3-21	30	20.6
22	223.11	238.3	P20B1-22	25	5.0	P20B2-22	30	13.9	P20B3-22	30	22.8
23	233.17	248.3	P20B1-23	25	5.5	P20B2-23	30	15.3	P20B3-23	30	25.2
24	243.23	258.4	P20B1-24	25	6.0	P20B2-24	30	16.8	P20B3-24	30	27.7
25	253.33	268.5	P20B1-25	25	6.5	P20B2-25	30	18.4	P20B3-25	30	30.3
26	263.40	278.6	P20B1-26	30	7.0	P20B2-26	30	20.0	P20B3-26	30	33.0
27	273.40	288.6	P20B1-27	30	7.6	P20B2-27	30	21.7	P20B3-27	30	35.8
28	283.56	298.7	P20B1-28	30	8.2	P20B2-28	30	23.5	P20B3-28	30	38.7
29	293.65	308.8	P20B1-29	30	8.8	P20B2-29	30	25.3	P20B3-29	30	41.8
30	303.75	318.9	P20B1-30	30	9.5	P20B2-30	30	27.2	P20B3-30	30	45.0
31	313.85	329.0	P20B1-31	30	10.1	P20B2-31	30	29.2	P20B3-31	30	48.3
32	323.91	339.1	P20B1-32	30	10.8	P20B2-32	30	31.2	P20B3-32	30	51.7
33	334.01	349.2	P20B1-33	30	11.5	P20B2-33	30	33.4	P20B3-33	30	55.2
34	344.10	359.3	P20B1-34	30	12.3	P20B2-34	30	35.5	P20B3-34	30	58.8
35	354.20	369.4	P20B1-35	30	13.0	P20B2-35	30	37.8	P20B3-35	30	62.5
36	364.30	379.5	P20B1-36	30	13.8	P20B2-36	30	40.1	P20B3-36	30	66.4
37	374.39	389.5	P20B1-37	30	14.6	P20B2-37	30	42.5	P20B3-37	30	70.4
38	384.49	399.6	P20B1-38	30	15.5	P20B2-38	30	45.0	P20B3-38	30	74.4
39	394.59	409.7	P20B1-39	30	16.3	P20B2-39	30	47.5	P20B3-39	30	78.7
40	404.68	419.8	P20B1-40	30	17.2	P20B2-40	30	50.1	P20B3-40	30	83.0
41	414.78	429.9	P20B1-41	30	18.1						
42	424.88	440.0	P20B1-42	30	19.0	P20B2-42	30	55.5	P20B3-42	40	91.5
43	434.97	450.1	P20B1-43	30	19.9						
44	445.07	460.2	P20B1-44	30	20.9						
45	455.17	470.3	P20B1-45	30	21.9	P20B2-45	30	64.1	P20B3-45	40	105.9
46	465.26	480.4	P20B1-46	30	22.9	P20B2-46	30	67.1	P20B3-46	40	110.9
47	475.36	490.5	P20B1-47	30	23.9						
48	485.46	500.6	P20B1-48	30	25.0	P20B2-48	30	73.3	P20B3-48	40	121.2
49	495.55	510.7	P20B1-49	30	26.1						
50	505.65	520.8	P20B1-50	30	27.2	P20B2-50	30	79.8	P20B3-50	40	132.0
51	515.75	530.9	P20B1-51	30	28.3						
52	525.84	541.0	P20B1-52	30	29.4	P20B2-52	40	86.3	P20B3-52	40	143.3
53	535.94	551.1	P20B1-53	30	30.6						
54	546.07	561.2	P20B1-54	30	31.8						
55	556.16	571.3	P20B1-55	30	33.0	P20B2-55	40	97.0	P20B3-55	40	161.1
56	566.26	581.4	P20B1-56	30	34.3						
57	576.36	591.5	P20B1-57	30	35.5	P20B2-57	40	104.5	P20B3-57	40	173.5
58	586.45	601.6	P20B1-58	30	36.8						
59	596.55	611.7	P20B1-59	30	38.1						
60	606.65	621.8	P20B1-60	30	39.4	P20B2-60	40	116.2	P20B3-60	40	192.9
62	626.87	642.0	P20B1-62	30	42.2						
64	647.06	662.2	P20B1-64	30	45.0						
65	657.16	672.3	P20B1-65	30	46.4	P20B2-65	40	137.0	P20B3-65	40	227.7
66	667.26	682.4	P20B1-66	30	47.9						
68	687.48	702.6	P20B1-68	30	50.9						
70	707.67	722.8	P20B1-70	30	53.9	P20B2-70	40	159.6	P20B3-70	40	265.3
72	727.90	743.1	P20B1-72	30	57.1						
75	758.19	773.3	P20B1-75	30	62.1						
76	768.32	783.5	P20B1-76	30	63.8	P20B2-76	40	189.0	P20B3-76	40	314.3
80	808.72	823.9	P20B1-80	30	70.7	P20B2-80	40	209.9	P20B3-80	40	349.2
85	859.25	874.4	P20B1-85	30	80.0						
90	909.76	924.9	P20B1-90	30	89.8						
95	960.28	975.4	P20B1-95	30	100.2	P20B2-95	40	298.3	P20B3-95	40	496.4
100	1010.79	1026.0	P20B1-100	40	111.1						
114	1152.26	1167.4	P20B1-114	40	144.7	P20B2-114	40	423.3	P20B3-114	40	720.0

All dimensions in mm.

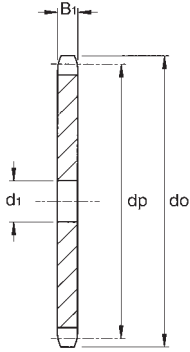
Stock Platewheels can be reworked to customers bore and keyway requirements, on 48 hour service.  
 Platewheels manufactured in steel 8 to 21 tooth with a minimum U.T.S. 600N/mm<sup>2</sup> - Above 21T - 410N/mm<sup>2</sup>  
 Platewheels 8 to 21 tooth can be supplied with teeth induction hardened to 45Rc.



# Standard Platewheels for 1 1/2" Pitch British Standard Chain Type 24B

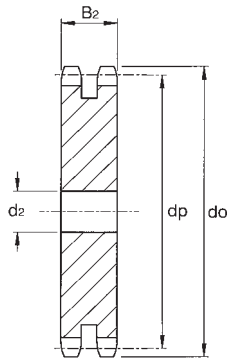


## Platewheels for Simplex Chain 24B-1 Conforming to ISO 606



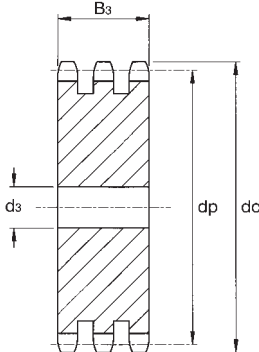
Chain No: 24B-1  
Pitch 38.10mm  
Roller Dia. 25.40mm  
Inside Width 25.40mm  
Overall Width 56.9mm  
Tooth Width B<sub>1</sub> 24.1mm

## Platewheels for Duplex Chain 24B-2 Conforming to ISO 606



Chain No: 24B-2  
Pitch 38.10mm  
Roller Dia. 25.40mm  
Inside Width 25.40mm  
Overall Width 105.0mm  
Tooth Width B<sub>2</sub> 72.0mm

## Platewheels for Triplex Chain 24B-3 Conforming to ISO 606



Chain No: 24B-3  
Pitch 38.10mm  
Roller Dia. 25.40mm  
Inside Width 25.40mm  
Overall Width 153.0mm  
Tooth Width B<sub>3</sub> 120.3mm

No. Teeth	Pitch Circle Ø dp	Outside Ø do	Platewheel for 24B-1 Chain			Platewheel for 24B-2 Chain			Platewheel for 24B-3 Chain		
			Cat. No.	Min. Bore d <sub>1</sub>	Approx. Weight kg	Cat. No.	Min. Bore d <sub>2</sub>	Approx. Weight kg	Cat. No.	Min. Bore d <sub>3</sub>	Approx. Weight kg
8	99.55	115.0	P24B1-08	20	1.0	P24B2-08	25	2.3	P24B3-08	25	3.6
9	111.40	126.4	P24B1-09	20	1.3	P24B2-09	25	3.1	P24B3-09	25	5.0
10	123.29	138.0	P24B1-10	20	1.6	P24B2-10	25	4.1	P24B3-10	25	6.7
11	135.21	150.0	P24B1-11	25	2.0	P24B2-11	25	5.2	P24B3-11	30	8.3
12	147.22	162.0	P24B1-12	25	2.4	P24B2-12	25	6.5	P24B3-12	30	10.4
13	159.18	174.2	P24B1-13	25	2.9	P24B2-13	25	7.9	P24B3-13	30	12.7
14	171.22	186.2	P24B1-14	25	3.4	P24B2-14	25	9.4	P24B3-14	30	15.2
15	183.26	198.2	P24B1-15	25	4.0	P24B2-15	25	11.0	P24B3-15	30	17.9
16	195.30	210.3	P24B1-16	25	4.6	P24B2-16	30	12.7	P24B3-16	30	20.8
17	207.34	222.3	P24B1-17	25	5.2	P24B2-17	30	14.6	P24B3-17	30	24.0
18	219.42	234.3	P24B1-18	25	5.9	P24B2-18	30	16.6	P24B3-18	30	27.3
19	231.49	246.5	P24B1-19	25	6.6	P24B2-19	30	18.8	P24B3-19	30	30.9
20	243.57	258.6	P24B1-20	25	7.4	P24B2-20	30	21.0	P24B3-20	30	34.7
21	255.65	270.6	P24B1-21	30	8.2	P24B2-21	30	23.5	P24B3-21	40	38.2
22	267.73	282.7	P24B1-22	30	9.1	P24B2-22	30	26.0	P24B3-22	40	42.5
23	279.80	294.8	P24B1-23	30	10.0	P24B2-23	30	28.7	P24B3-23	40	46.9
24	291.88	306.8	P24B1-24	30	10.9	P24B2-24	30	31.5	P24B3-24	40	51.6
25	304.00	319.0	P24B1-25	30	11.9	P24B2-25	30	34.4	P24B3-25	40	56.5
26	316.08	331.0	P24B1-26	30	12.9	P24B2-26	30	37.5	P24B3-26	40	61.6
27	328.19	343.2	P24B1-27	30	13.9	P24B2-27	30	40.7	P24B3-27	40	66.9
28	340.27	355.2	P24B1-28	30	15.0	P24B2-28	30	44.0	P24B3-28	40	72.5
29	352.38	367.3	P24B1-29	30	16.2	P24B2-29	30	47.4	P24B3-29	40	78.2
30	364.50	379.5	P24B1-30	30	17.4	P24B2-30	30	51.0	P24B3-30	40	84.2
31	376.62	391.6	P24B1-31	30	18.6	P24B2-31	40	54.4	P24B3-31	40	90.4
32	388.69	403.7	P24B1-32	30	19.8	P24B2-32	40	58.3	P24B3-32	40	96.8
33	400.81	415.8	P24B1-33	30	21.2	P24B2-33	40	62.2	P24B3-33	40	103.4
34	412.93	427.8	P24B1-34	30	22.5	P24B2-34	40	66.3	P24B3-34	40	110.2
35	425.04	440.0	P24B1-35	30	23.9	P24B2-35	40	70.5	P24B3-35	40	117.3
36	437.16	452.0	P24B1-36	30	25.3	P24B2-36	40	74.9	P24B3-36	40	124.6
37	449.27	464.2	P24B1-37	30	26.8	P24B2-37	40	79.4	P24B3-37	40	132.1
38	461.39	476.2	P24B1-38	30	28.3	P24B2-38	40	84.0	P24B3-38	40	139.8
39	473.50	488.5	P24B1-39	30	29.9	P24B2-39	40	88.7	P24B3-39	40	147.6
40	485.62	500.6	P24B1-40	30	31.5	P24B2-40	40	93.6	P24B3-40	40	155.8
41	497.74	512.6	P24B1-41	30	33.2	P24B2-41	40	98.6	P24B3-41	40	164.2
42	509.85	524.7	P24B1-42	30	34.8	P24B2-42	40	103.7	P24B3-42	40	172.8
43	521.97	536.8	P24B1-43	30	36.6	P24B2-43	40	108.9	P24B3-43	40	181.6
44	534.08	549.0	P24B1-44	30	38.3	P24B2-44	40	114.2	P24B3-44	40	190.6
45	546.20	561.2	P24B1-45	30	40.2	P24B2-45	40	119.5	P24B3-45	40	199.8
46	558.32	573.3	P24B1-46	30	42.0	P24B2-46	40	125.6	P24B3-46	40	209.2
47	570.43	585.4	P24B1-47	30	43.9	P24B2-47	40	131.7	P24B3-47	40	218.8
48	582.55	597.4	P24B1-48	30	45.8	P24B2-48	40	137.3	P24B3-48	40	228.8
49	594.66	609.5	P24B1-49	30	47.8	P24B2-49	40	143.4	P24B3-49	40	238.8
50	606.78	621.7	P24B1-50	30	49.8	P24B2-50	40	149.5	P24B3-50	40	249.2
51	618.89	633.8	P24B1-51	30	51.9	P24B2-51	40	155.6	P24B3-51	40	260.0
52	631.01	646.0	P24B1-52	30	54.0	P24B2-52	40	161.7	P24B3-52	40	271.2
53	643.13	658.0	P24B1-53	30	56.2	P24B2-53	40	167.8	P24B3-53	40	282.8
54	655.28	670.2	P24B1-54	30	58.3	P24B2-54	40	173.9	P24B3-54	40	294.8
55	667.40	682.3	P24B1-55	30	60.6	P24B2-55	40	180.0	P24B3-55	40	307.2
56	679.51	694.4	P24B1-56	30	62.8	P24B2-56	40	186.1	P24B3-56	40	320.0
57	691.63	706.5	P24B1-57	30	65.2	P24B2-57	40	192.2	P24B3-57	40	333.2
58	703.74	718.6	P24B1-58	30	67.5	P24B2-58	40	198.3	P24B3-58	40	346.8
59	715.86	730.7	P24B1-59	30	69.9	P24B2-59	40	204.4	P24B3-59	40	360.8
60	727.97	742.8	P24B1-60	30	72.3	P24B2-60	40	210.5	P24B3-60	40	375.2
62	752.24	767.2	P24B1-62	40	77.2	P24B2-62	40	222.6	P24B3-62	40	400.8
64	776.48	791.3	P24B1-64	40	82.4	P24B2-64	40	234.7	P24B3-64	40	427.2
65	788.59	803.4	P24B1-65	40	85.1	P24B2-65	40	240.8	P24B3-65	40	439.2
66	800.71	815.6	P24B1-66	40	87.8	P24B2-66	40	246.9	P24B3-66	40	451.6
68	824.98	839.8	P24B1-68	40	93.3	P24B2-68	40	263.0	P24B3-68	40	483.2
70	849.21	864.2	P24B1-70	40	98.9	P24B2-70	40	279.1	P24B3-70	40	515.6
72	873.48	888.4	P24B1-72	40	104.8	P24B2-72	40	295.2	P24B3-72	40	548.8
75	909.83	924.8	P24B1-75	40	113.8	P24B2-75	40	327.3	P24B3-75	40	614.4
76	921.98	939.9	P24B1-76	40	116.9	P24B2-76	40	333.4	P24B3-76	40	627.2
80	970.44	985.7	P24B1-80	40	129.8	P24B2-80	40	375.5	P24B3-80	40	713.6
85	1031.10	1046.0	P24B1-85	40	146.8	P24B2-85	40	427.6	P24B3-85	40	811.2
95	1152.33	1167.0	P24B1-95	40	183.9	P24B2-95	40	513.7	P24B3-95	40	934.4

All dimensions in mm.  
Stock Platewheels can be reworked to customers bore and keyway requirements, on 48 hour service.  
Platewheels manufactured in steel 8 to 21 tooth with a minimum U.T.S. 600N/mm<sup>2</sup> - Above 21T - 410N/mm<sup>2</sup>  
Platewheels 8 to 21 tooth can be supplied with teeth induction hardened to 45Rc.

Tel +44(0) 121 360 0155

Fax +44(0) 121 325 1079

Email sales@crossmorse.com



# Steel Adaptors for Platewheels



Tel +44(0) 121 360 0155

Fax +44(0) 121 325 1079

Email sales@crossmorse.com

Steel adaptors, used in conjunction with standard platewheels (pp 59-68) enable low cost production of steel sprockets with tooth range 19-114 teeth. Three types of adaptors are available, threaded adaptor, weld-on hubs, and detachable hubs.

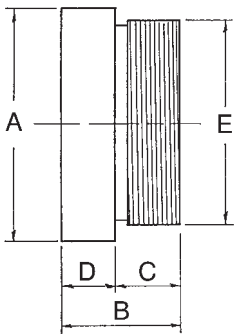
**The threaded adaptors** were originally developed to convert cycle sprockets for industrial use. They enable simple, quick exchange of platewheels to adjust drives for prototypes and development work. These adaptors are suitable for simplex platewheels from  $\frac{3}{8}$ " to  $\frac{3}{4}$ " pitch chain, and also for Industrial Ratchet Freewheels (refer catalogue 'Freewheel Clutches').

**The weld-on hubs** are designed to enable conversion of platewheels to sprockets, with a fully welded construction. They are available with pilot parallel bore, finish bored and keyed, or bored to suit standard taper bushes.

**Detachable hubs** enable modifications in the field by replacement of platewheels. A limited level of phasing can also be achieved, dependant on number of teeth in the sprocket. In addition to production of sprockets, adaptors can also be used in the construction of fans, wheels and conveyor rollers.



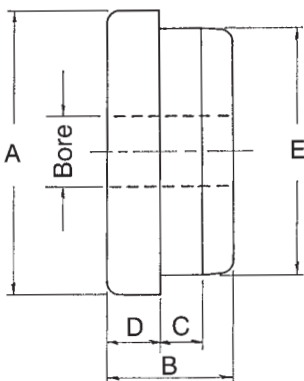
## Threaded Adaptors with Solid Bore



Hub Ref.	Max Bore	A Max	B	C	D	E R.H. Thread C.E.I. Form 24T.P.I.	Approx. Weight Kg
A211	20	42	27	14.3	12.7	1.37"	0.23
A212	24	48	27	14.3	123.7	1.625"	0.32
A213	30	58	27	14.3	12.7	2.00"	0.48

Hubs can be supplied bored, keywayed and setscrewed to customers requirements. Some sizes platewheels for 081, and 08B-1 chain stocked with threaded bore for A211 adaptor.

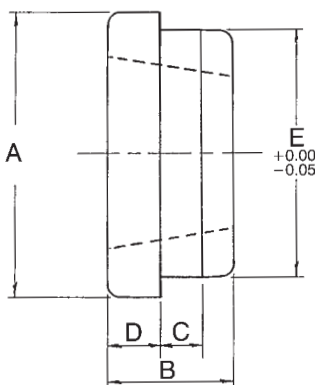
## Steel Weld-on Hubs with Pilot Bore



Hub Ref.	Pilot Bore Size	Max Bore	A	B	C	D	E	Approx. Weight Kg
A214	20	40	70	38	11	16	60.00 59.95	0.89
A215	20	45	80	38	11	16	70.00 59.95	1.25
A216	25	55	95	44	13	19	85.00 84.95	2.10
A217	25	70	120	44	13	19	110.00 109.95	3.51
A218	25	85	145	51	16	19	130.00 129.95	5.78

Hubs can be supplied bored and keywayed to customers requirements.

## Steel Weld-on Hubs with Taper Bore



Hub Ref.	Use Bush Size	Max Bore	A	B	C	D	E	Approx. Weight Kg
H12	1210	32	70	25	10	9	65	0.25
H16	1610	42	80	25	10	9	75	0.41
H20	2012	50	95	32	12	12	90	0.75
H25	2517	60	115	45	15	19	110	1.48
H30	3020	75	145	51	15	19	140	2.73
W30	3030	75	145	76	15	19	140	4.05
H35	3525	90	190	65	25	25	180	4.70
W35	3535	90	190	89	25	25	180	6.40
H40	4040	100	200	102	30	32	190	13.80

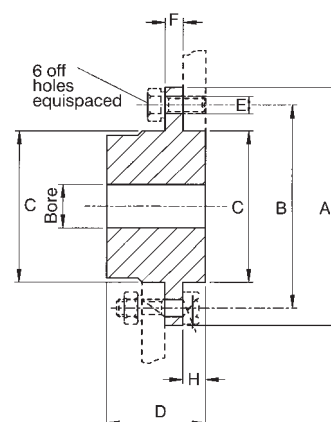
Hubs are taper bored and drilled to suit standard taper bushes (refer pp. 38/39). Earlier series 'M' taper bore hubs are available on short delivery. M25 & M30 have been superseded by H25 & H30 respectively. All dimensions in mm.

# Steel Adaptors and Idler Sprockets



## Detachable Hubs

Hub Ref.	Min. Bore	Max. Bore	A	B	C	D	E	F	H	App. Wt.
D30	8	20	55	45	30	20.0	4.2	4	3.0	0.15
D40	10	26	70	58	40	25.0	5.2	5	5.2	0.32
D50	14	32	80	67	50	32.0	6.2	7	7.0	0.61
D60	16	40	90	76	60	38.5	6.2	7	8.7	0.95
D70	20	45	110	94	70	45.5	8.2	8	10.5	1.90
D80	25	52	130	107	80	55.0	8.2	12	15.0	2.65
D100	30	65	170	140	100	73.0	10.2	17	23.0	6.00
D140	35	90	220	182	140	83.0	12.2	20	23.0	13.08
D160	40	104	245	205	160	93.0	16.5	25	25.0	18.80



All dimensions in mm.  
Hubs can be supplied bored and keywayed to customers requirements.

## Idler Sprockets

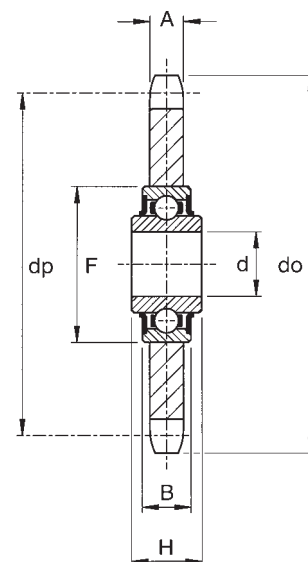
The standard Idler Sprockets in this series are supplied complete with built in fully shielded and greased for life ball bearing, providing full lifetime maintenance free operation. Two standards of bearings are offered, an economy bearing for light duty applications, and a top quality European bearing for higher loads and speeds.

The extended width inner race enables correct mounting on the shaft without the need for spacers. The sprocket is manufactured from medium carbon steel and secured to the outer race of the bearing by press fit. Many chain drives, by virtue of their design, require a tensioning sprocket, and where fixed idlers are preferred this range of Idler Sprockets provides the ideal solution.

In addition to the standard range, Idler Sprockets can be manufactured to order to suit other sizes of B.S. Standard Chains and ANSI Series, in both Simplex and Multistrand construction, and with alternate numbers of teeth.



Part No.	Chain Size	Sprocket Dimensions				Bearing Dimensions				Weight
		No. Teeth	P.C.D.	OD	Tooth Width	Min Bore	Hub Dia	LTB	Approx. kg	
		Z	dp	do	A	d	F	B	H	
IS05B1-23T	05B1	23	58.75	62.0	7.0	16.0	40.0	12.0	18.3	0.15
IS06B1-20T	06B1	20	60.89	64.3	7.0	16.0	40.0	12.0	18.3	0.07
IS06B1-21T	06B1	21	63.90	68.0	7.0	16.0	40.0	12.0	18.3	0.16
IS081-18T	081	18	73.14	78.9	7.0	16.0	40.0	12.0	18.3	0.21
IS083-16T	083	16	65.10	70.9	7.0	16.0	40.0	12.0	18.3	0.50
IS083-18T	083	18	73.14	78.9	7.0	16.0	40.0	12.0	18.3	0.20
IS08B1-14T	08B1	14	57.07	61.8	7.2	16.0	40.0	12.0	18.3	0.11
IS08B1-15T	08B1	15	61.09	65.5	7.2	16.0	40.0	12.0	18.3	0.12
IS08B1-16T	08B1	16	65.10	69.5	7.2	16.0	40.0	12.0	18.3	0.18
IS08B1-18T	08B1	18	73.14	77.8	7.2	16.0	40.0	12.0	18.3	0.23
IS08B1-20T	08B1	20	81.19	85.8	7.2	16.0	40.0	12.0	18.3	0.26
IS08B1-21T	08B1	21	85.22	89.7	7.2	16.0	40.0	12.0	18.3	0.26
IS10B1-13T	10B1*	13	66.32	73.0	9.1	16.0	40.0	12.0	18.3	0.24
IS10B1-14T	10B1*	14	71.34	78.0	9.1	16.0	40.0	12.0	18.3	0.24
IS10B1-15T	10B1*	15	76.36	83.0	9.1	16.0	40.0	12.0	18.3	0.27
IS10B1-16T	10B1*	16	81.37	88.0	9.1	16.0	40.0	12.0	18.3	0.32
IS10B1-17T	10B1*	17	86.39	93.0	9.1	16.0	40.0	12.0	18.3	0.33
IS10B1-18T	10B1*	18	91.42	98.3	9.1	16.0	40.0	12.0	18.3	0.30
IS10B1-21T	10B1*	21	106.52	113.4	9.1	16.0	40.0	12.0	18.3	0.50
IS12B1-12T	12B1	12	73.60	81.5	11.1	16.0	40.0	12.0	18.3	0.32
IS12B1-13T	12B1	13	79.59	87.5	11.1	16.0	40.0	12.0	18.3	0.36
IS12B1-15T	12B1	15	91.63	99.8	11.1	16.0	40.0	12.0	18.3	0.45
IS12B1-16T	12B1	16	97.65	105.5	11.1	16.0	40.0	12.0	18.3	0.50
IS16B1-12T	16B1	12	98.14	109.0	16.2	20.0	47.0	14.0	17.7	0.65
IS16B1-15T	16B1	15	122.17	133.0	16.2	20.0	47.0	14.0	17.7	1.10
IS16B1-17T	16B1	17	138.24	149.0	16.2	20.0	47.0	14.0	17.7	1.50
IS20B1-13T	20B1	13	132.65	147.8	18.5	25.0	52.0	15.0	21.0	1.50



\*Also suitable for ANSI 50 Chain.